

## COMPRESSION DIES

Model No.: CD

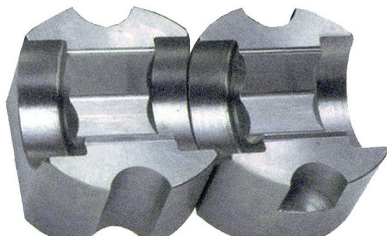
This COMPRESSION DIES is tool to compress the sleeve for connecting conductor to conductor.

### FEATURES

- \* The diea are applicable for over head conductor ACSR or AAAC etc.
- \* The dies is manufactured for 100ton,150ton,200ton capacity of cylinder and each dies is used by capacity of hydraulic cylinder.

---

#### 100 TON Model No : CD-100



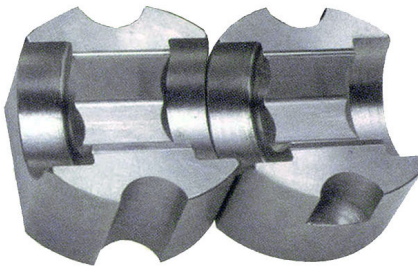
##### Max. size of Conductor

Steel : 26 mm

Aluminum : 52 mm

**Weight of Dies** : 7.5 kg (1pair)

#### 150 TON Model No : CD-150



##### Max. size of Conductor

Steel : 40 mm

Aluminum : 86 mm

**Weight of Dies** : 8 kg (1pair)

#### 200 TON Model No : CD-200



##### Max. size of Conductor

Steel : 42 mm

Aluminum : 95 mm

**Weight of Dies** :10 kg (1pair)